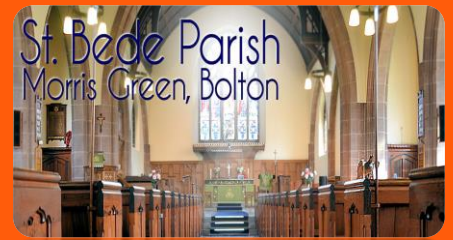




St Bede

Parish Church, Bolton-le -Moors



6th January
2019

Epiphany

PLEASE REMEMBER IN YOUR PRAYERS

Guest Editorial

Today we celebrate the feast of the Epiphany known in some countries as the three Kings day. Epiphany means a revelation or a surprise disclosure. Three gifts were brought to Jesus, gold symbolising kingship, incense sweet smelling for worship, and myrrh used for embalming the dead. It was good for the holy family to receive the gifts and we are not told how they used them but what we are told is that God spoke to Joseph in a dream and told him to take his family to Egypt to escape from Herod who was seeking to kill all young boys. A refugee family in every sense. Fleeing from Herod to save Jesus life. Epiphany was also the time when Jesus was shown to none Jews that is Gentiles. Traditionally there were three Kings because of the three gifts. In many countries especially Spanish ones, Epiphany is celebrated more than Christmas with big gifts and feasting. We may not celebrate in this country but to quote the hymn, "what can I give Him poor as I am if I were a shepherd, I would bring a lamb, if I were a wise man, I would play my part, what can I give Him give my heart". That is what God desires from each one of us, to love and serve Him to His glory each day of our lives. A Happy New year to you all

Malcolm & Pat

Today's Service

This week is **All Age Communion**
Readings are: Ephesians 3 vs 1 – 12
& Matthew 2 vs. 1 – 12

Next week is **Holy Communion & Groups**
Readings are: Acts 8 vs 14 – 17 & Luke 3 vs. 15 – 17, 21-22

Today's Collect

Creator of the heavens, who led the Magi by a star to worship the Christ-child: guide and sustain us, that we may find our journey's end in Jesus Christ our Lord.

People be like:
He doesn't act like a
Christian.

God be like:
I'm not looking for actors.

Please pray...

Marcus and Belinda
Jeff
Baby Anthony
Jean
Marlene
Michael
Doreen
Minti
Ronnie
Gabrielle
Mark
Carys
Colin
Toby
Baby Louie
Rachel
John
Johanna
John
Norma & David
Healing for Sarah
Keith
Bernard
Edward
Norman
Lynn

We come before you, O Lord, with nothing except the gift of our hearts in prayer. Hear us and bring us your peace.






THE CHURCH OF ENGLAND
 Diocese of Manchester



From all at St Bede!

News...



CHRISTMAS COMPETITION

The winner announced today! Thanks for those who took part! Answers further on in this newsletter and the answers of the 'Just for Fun' Carols quiz also in this edition.

CHURCH ARMY

The Church Army Prayer Diaries for the New Year are now on the table in the Foyer of the Church. Also, you will find the Church Army Impact Report ('Everyone, Everywhere'). this booklet tells you what their work includes and it's full of information about everything the Church Army do. **PLEASE TAKE A COPY OF EACH ONE.** We receive 10 copies and it would be good to not waste this resource. Please take a copy, they are free.

LAMB MISSION PARTNERSHIP LENT COURSE 2019

How should Christians live? The church should be a distinctive community of God's people—but how different are we from the rest of the world? This seven-week track helps us untangle some of the false ideas and traditions that evangelicals have had in the past and reveals the more deeply challenging picture that emerges from Scripture.

Given that there are seven sessions with this course we would likely need to begin it in the week beginning **Sunday 24th February**.

We will, however, be asking for a small donation from each person attending the sessions to help pay for the materials we want to use.

Please can you let Gill or Jean know if this is something you would be interested in.

Thank you.

HOLOCAUST MEMORIAL DAY COMMEMORATION

Theme this Year - "**Torn from Home**"

The service is organised by Bolton Council, Bolton Interfaith Council and supported by many groups in the Borough.

Please do attend and if anyone wishes to contribute with a Reading- poetry, personal story.music etc -please see Tony for details.

Bolton do well with participation and support at this Service with many contributions from schools and community groups hence they are hoping that will be same again this year.

For more information about the HMD- please visit the www.hmd.org.uk website



FUNDRAISING

If you have any ideas for how we can raise our much-needed funds, please let us know. Meetings to be announced shortly and **ALL ARE WELCOME**.



Our Church depends very heavily on fundraising as well as regular giving to keep our Church afloat. We work very hard to put on different events, but we need these events to be supported if they are to be successful in raising funds and providing opportunities to share fellowship as a Church.

Christmas Competitions - Answers

Christmas Carol Quiz Answers

1. Oh the weather outside is frightful
2. Come, All Ye Faithful
3. Figgy pudding
4. Ding Dong Merrily on High
5. Six types of birds: Partridge, Turtle Doves, French Hens, Calling Birds, Geese, and Swans
6. Newborn King
7. The Christmas Song
8. God Rest Ye Merry Gentlemen
9. Little Town of Bethlehem
10. Little Drummer Boy
11. Holiday Inn
12. Once in Royal David's City
13. The First Noel
14. On the Feast of Stephen
15. You'll go down in history
16. Jingle Bells
17. Hay
18. Winter Wonderland
19. Pear tree
20. Have Yourself a Merry Little Christmas



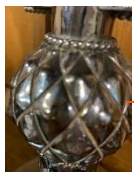
WEEK 1



The Pulpit



WEEK 2



The Cross behind the Altar



WEEK 3



The Girls Guides Banner in the Sanctuary



WEEK 4



The Foot of the Eagle on the Lectern



WEEK 5



The Wooden Carving on the Font



WEEK 6



Stained Glass window by the Font



WEEK 7



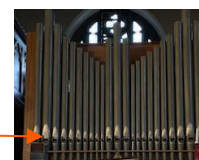
War Memorial in the Community Room



WEEK 8



Our Organ



As you have received, so may you be pleased to give.

St Bede's is a living Church and its people are The Church. The Church's only financial support is its own Church family.

Please try to support the social and fundraising events as they are vital not only to the financial wellbeing of our Church, but are great opportunities to get to know one another better.

Your Church thanks you for your gifts of money, time and talents.



JUBILEE AND COMMUNITY ROOMS

The Community Room and the Jubilee room are available to hire for parties, meetings etc. Please see one of the Church Wardens, Gill or Jean

St Bede
Parish,
Morris
Green

Normanby Street, Bolton,
BL3 3QR

CONTACTS

Priest-in-Charge – Rev Vinny Whitworth (starting in early 2019)

Associate Priest – Rev Malcolm Bristow – 01204 659816

Church Wardens – Jean Philips – 01204 294212 Gill Blackburn – 01204 660396

PCC Secretary – Jean Philips – 01204 294212

Organist – David Platt

Newsletter Editors – Tony Whitehead 07967223380 & Sharron Hardman – 01204 700848

Administrator – Elaine Almond

St Bede Primary Academy Head of School – Sarah Rostron – 01204 61899



ST BEDE'S CHURCH, MORRIS GREEN, BOLTON-LE-MOORS
@BedeParish,

newsletter@st-bede.org.uk info@st-bede.org.uk churchoffice@st-bede.org.uk

www.st-bede.org.uk